

## 9-Ch Network Video Recorder



### Efficient SMB Surveillance Solution

PLANET NVR-915 is a 9-channel Linux embedded network video recorder (NVR) for restaurants, retail stores, stockrooms and more. The NVR-915 supports IP cameras with up to 5 megapixels and H.264 video codec for high-quality real-time monitoring, recording and playback. It also supports high-resolution video quality on any HD monitor. With two internal 4TB SATA III hard disks and e-SATA interface, it provides you with more storage capacity and keeps video files in the NVR for a long period of time. Once the NVR-915, armed with a complete surveillance equipment, detects any suspicious events, you will be alerted with alarm via email; FTP, HTTP and TCP servers; and more. The NVR-915 is thus able to further enhance security within the premises to protect your property. Moreover, it is fully compatible with mobile app and Internet Explorer on Windows operating system for multi-platform remote access.



### Hardware

- Linux-embedded, highly reliable standalone NVR
- Supports Gigabit Ethernet port
- Supports VGA / HDMI dual local display
- Supports two 3.5" SATA III HDDs
- Supports e-SATA

### Video / Audio

- Simultaneous recording and live view streams
- 9 channels input of IP cameras
- Supports H.264 compression
- Video resolution up to 5 megapixels (2560 x 1920)
- Supports throughput up to 48Mbps
- 2-way audio (G.711, G.726)

### Video Recording / Backup

- Scheduled recording of 9 IP cameras simultaneously
- Samba path supported
- Supports 2 SATA HDDs, up to 4TB per HDD, and 1 e-SATA interface
- Exports recorded video file to AVI format to USB device or local storage
- Instant event notification and recording

### Network Service

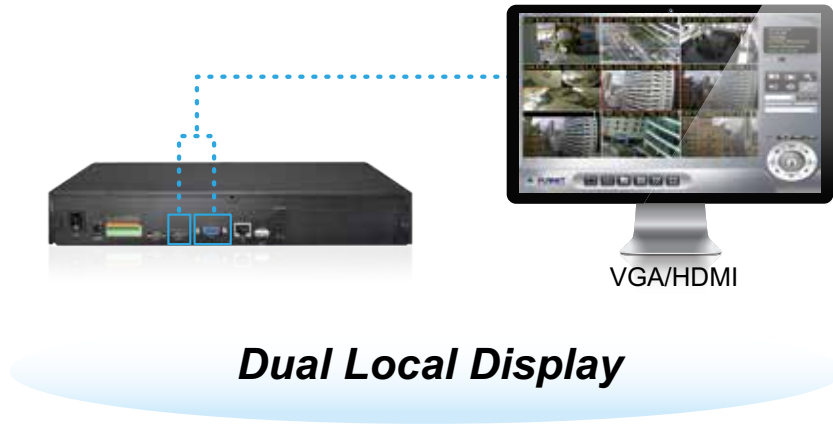
- Easy access with PLANET Dynamic DNS and built-in NTP Server
- Supports PPPoE / DHCP / static network connection
- Supports low bit-rate connection for remote access

### Easy Installation & Management

- ONVIF compliant for interoperability
- Supports multiple languages
- Auto discovered by management software
- Web-Based and management utility for easy configuration
- Up to 256 channels management through central management software
- Supports USB mouse and joystick (PTZ)\*
- Supports mobile phone remote view

### High-resolution Local Display

The NVR-915 comes with HDMI and VGA video output interfaces for dual local display. It can be connected to an HDMI monitor and VGA monitor separately, where live viewing contents or playback contents can be displayed simultaneously. With the dual local display function, users can monitor locally with high flexibility in a different display resolution, thus eliminating the need for a separate PC to view video from the unit. Besides, the NVR also can be operated with the USB mouse to configure and monitor all the system easily.

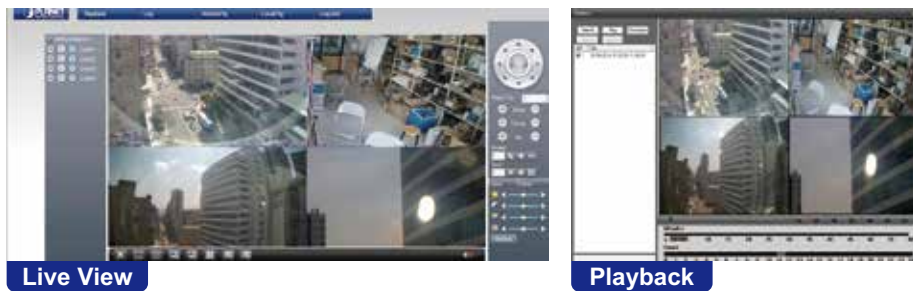


### Dual Local Display

### Real-time, Remote Monitoring

You are able to search and install Planet IP cameras via Web interface with more convenience and efficiency. Besides the Web interface, the NVR also supports aCV3m viewer app software for smart phone so you can connect to the NVR at anytime and anywhere.

### Real-time, Remote Monitoring



### Live View and CMS Administration

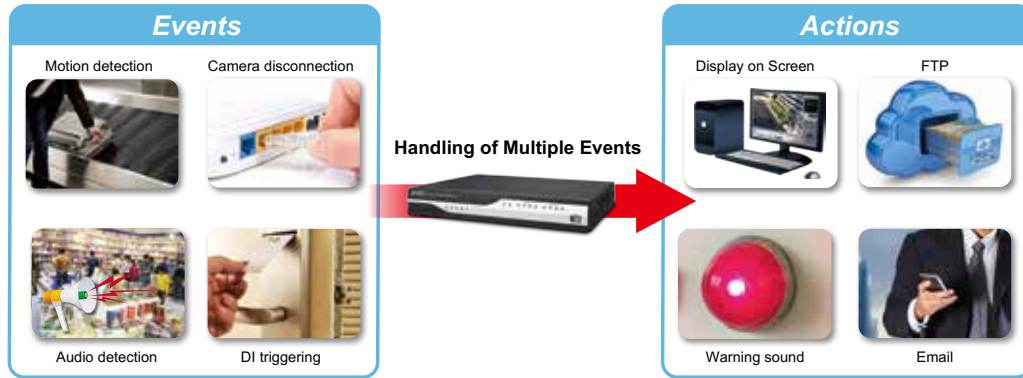
The Central Management System (CMS) of the NVR-915 can manage up to 256 channels. With low bitrate transmission and unlimited group management, the CMS is able to view a maximum of 64 channels on one page and you may switch between groups to see up to 256 channels of live view or a maximum of 16 channels of playback on one page. The CMS of the NVR-915 is good for chain stores via Internet, large installations in the LAN environment, or any environment where its control center is utilized to monitor via multiple NVRs.



## Applications

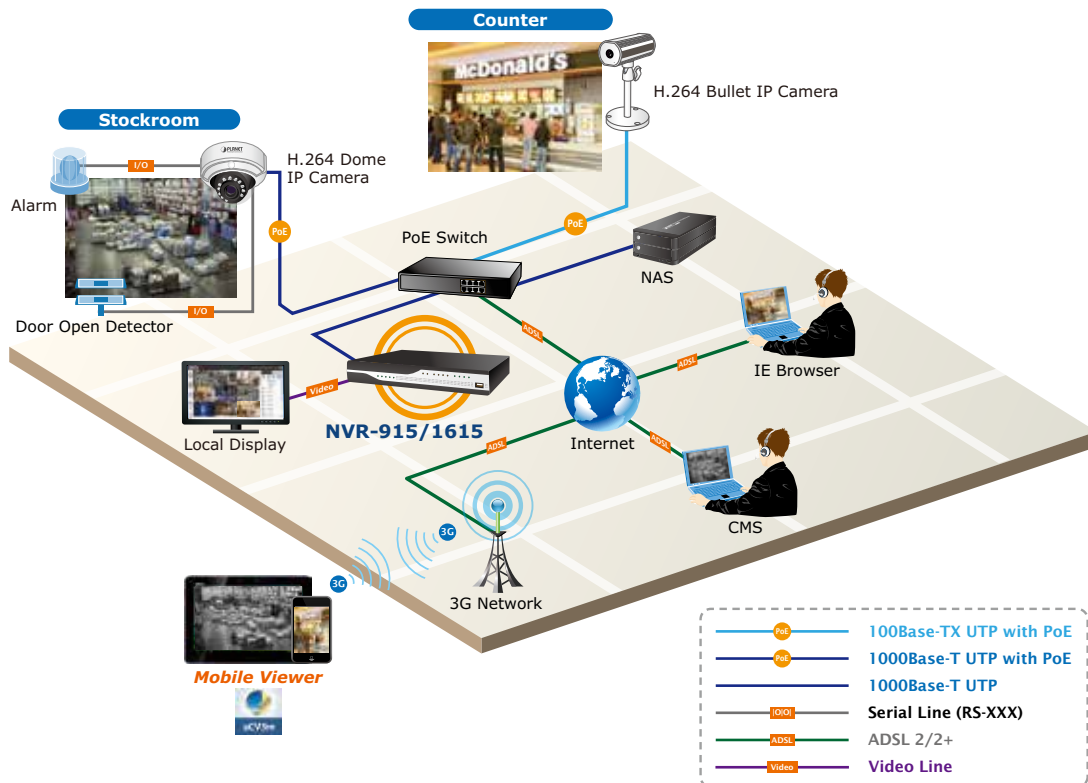
### Advanced Event Management

The NVR-915 is equipped with multiple event detections like motion, camera disconnection, digital input detection, audio detection, HDD error and scheduled event triggering. All of them are able to send alarm through screen, digital output, buzzer, snapshot, recording, email, FTP, HTTP and TCP servers. Those alarm notifications provide you with extra protection when such event occurs so you won't miss any critical information.



### Perfect for Indoor Surveillance Applications

PLANET NVR systems can be controlled and monitored both in the local LAN and the remote site via Internet. Users can also login from their mobile phones to check the monitoring screen anywhere, anytime. It is especially perfect for indoor surveillance in such places as restaurants, retail stores, stockrooms, etc.



## Specifications

|  |   |
|--|---|
| Product                                    | NVR-915   |
| <b>Hardware</b>                            |   |
| Ethernet                                   | 1 x RJ-45, 10/100/1000BASE-T  |
| USB Interface                              | 2 x USB 2.0 for backup device and mouse   |
| Video Interface                            | VGA and HDMI video interfaces   |
| Audio Interface                            | 1 x mic-in (phone jack 3.5mm), 1 x audio-out (phone jack 3.5mm)   |
| Storage Device                             | 2 x 3.5" SATA III hard disk connector, 1 x e-SATA connector   |
| LED  | Power, HDD, LAN, REC, Event, Alarm, Camera, DI/DO   |
| Button                                     | Reset   |
| Buzzer                                     | 1 x Buzzer  |
| DI/DO                                      | 4 x Digital in, 4 x Digital out   |
| <b>Camera</b>                              |   |
| Max. Channels                              | 9-channel IP cameras  |
| Camera Added                               | Manual / Auto Search / Auto Setup   |
| <b>Video</b>                               |   |
| Compression                                | H.264   |
| Resolution                                 | 5M / 3M / Full HD / SXGA / VGA / QVGA   |
| Max. Live Video Frame Rate (Local Display) | 480fps@D130<br>360fps@720P30<br>120fps@1080P30<br>20fps@5M15<br>Max. 5MP/channel  |
| Max. Throughput                            | 48Mbps  |
| Snapshot                                   | <ul style="list-style-type: none"> <li>■ Preview snapshot in HDD or removable device</li> <li>■ Search event snapshot</li> <li>■ Backup to USB device</li> </ul>  |
| <b>Audio</b>                               |   |
| Audio Type                                 | 2-way   |
| Audio Format                               | G.711, G.726  |
| <b>Live View</b>                           |   |
| Display Mode                               | Live View / Playback / Full Screen  |
| Split Screen                               | 1 / 4 / 6 / 9 / Full Screen   |
| Full Screen                                | 1 / 4 / 6 / 9   |
| PTZ Support                                | Preset / Tour / Auto Pan / Iris / Focus / Speed and Joystick  |
| <b>Playback</b>                            |   |
| Split Screen                               | 1 / 4 / 6 / 9 / Full Screen   |
| Search Mode                                | Simple / Graphical / Event  |
| Play Method                                | Play / Reverse / Pause / Seek / Pre I-frame / Next Frame<br>Search by time or event   |
| <b>Record</b>                              |   |
| Recording Mode                             | <ul style="list-style-type: none"> <li>■ Scheduled recording each camera</li> <li>■ Round the Clock / Motion Record mode / DI Detection / Event Triggering</li> <li>■ Pre-alarm / Post-alarm configuration</li> <li>■ Auto Recycle</li> </ul> |
| <b>Monitor</b>                             |   |
| Dual Monitor                               | Displays the same contents, depending on max. channels  |
| Monitor Resolutions                        | 1920x1080, 1440x900, 1366x768, 1280x1024, 1024x768  |
| <b>Network and Configuration</b>           |   |
| Network Service                            | Fixes IP / DHCP / PPPOE / DIPS Report / UPNP / DDNS   |
| Notification                               | SMTP / HTTP / FTP / TCP   |
| <b>Triggers and Event</b>                  |   |
| Event Type                                 | <ul style="list-style-type: none"> <li>■ Motion Alarm</li> <li>■ Alarm Disconnection</li> <li>■ Audio Detection</li> <li>■ Digital Input</li> <li>■ Scheduled Triggering</li> <li>■ HDD Error</li> </ul>                                      |

|                        |  |
|------------------------|--|
| Event Action           | <ul style="list-style-type: none"> <li>■ Display on Screen</li> <li>■ DO</li> <li>■ Buzzer Alarm</li> <li>■ Snapshot</li> <li>■ Recording</li> <li>■ Mail</li> <li>■ FTP</li> <li>■ TCP</li> <li>■ HTTP</li> </ul> |
| <b>Management</b>      |  |
| Number of Groups       | 2 (Administrator and User )  |
| Privileges             | Live View / Playback / Record / Setting / PTZ / Two-way Audio  |
| User Interface         | <ul style="list-style-type: none"> <li>■ Graphic local user interface (operated by mouse)</li> <li>■ Web browser (Internet Explorer 7 or above)</li> <li>■ CMS Utility</li> </ul>                                  |
| Log Type               | System / Event / Bit-rate  |
| Software Utility       | Search utility / Mobile app / CMS  |
| <b>Environment</b>     |  |
| Power                  | 12V DC, 4.16A  |
| Consumption            | 8W (without HDD)   |
| Operating Temperature  | 0~40 degrees C   |
| Storage Temperature    | -40~70 degrees C   |
| Humidity               | 0~85% (non-condensing)   |
| Weight                 | 1455g  |
| Dimensions (W x D x H) | 330 x 252 x 57 mm  |

## Ordering Information

|         |                             |
|---------|-----------------------------|
| NVR-915 | 9-Ch Network Video Recorder |
|---------|-----------------------------|

## Related Products

|           |  |
|-----------|--|
| NVR-1615  | 16-Ch Network Video Recorder             |
| CV3P-4    | 4-Channel Cam Viewer 3 Professional      |
| CV3P-8    | 8-Channel Cam Viewer 3 Professional      |
| CV3P-16   | 16-Channel Cam Viewer 3 Professional     |
| CV3P-36   | 36-Channel Cam Viewer 3 Professional     |
| CV3P-64   | 64-Channel Cam Viewer 3 Professional     |
| NVR-420   | 4-Ch Network Video Recorder with HDMI    |
| NVR-810   | 8-Ch Network Video Recorder              |
| NVR-820   | 8-Ch Network Video Recorder with HDMI    |
| NVR-1610  | 16-Ch Network Video Recorder             |
| NVR-1620  | 16-Ch Network Video Recorder with HDMI   |
| NVR-3210  | 32-Ch Network Video Recorder             |
| NVR-3250  | 32-Ch Rack-mount Network Video Recorder  |
| CV3-M1024 | 1024-Channel Central Management Software |