



AVH1109

8CH PoE Solution
EaZy Networking
Push Video / Push Status
Alarm Scenario Setup

9CH H.265 NVR w/ 8CH POE

Features

H.265 Compression Technology

With this compression technology, the recording capacity is greatly enhanced as well as bandwidth saving for better efficiency and performance than the systems employing other compression formats

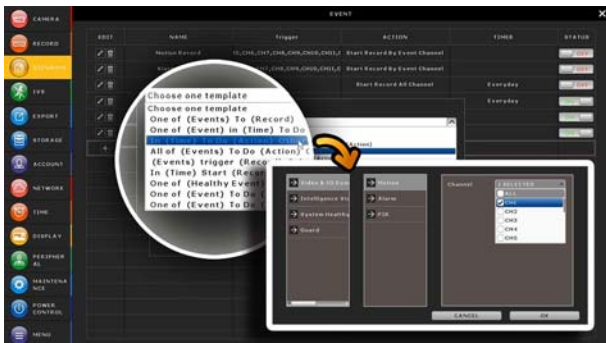


Cloud Service - EaZy Networking*

- EaZy Networking, the cloud service provided by AVTECH, available to connect this device to Internet automatically in three steps with our free mobile app, EagleEyes.
- The “Buddy” feature to share the device access permission to other people.
- Device login / out notifications reported.

Alarm Scenario Customization

“Scenario” is a new feature allowing you to customize a series of actions which will be run automatically after the specified event occurs. There are several scenario templates for you to choose when and what to do after a specific event occurs.



Push Video & Push Status - Active Event Notification with EagleEyes App

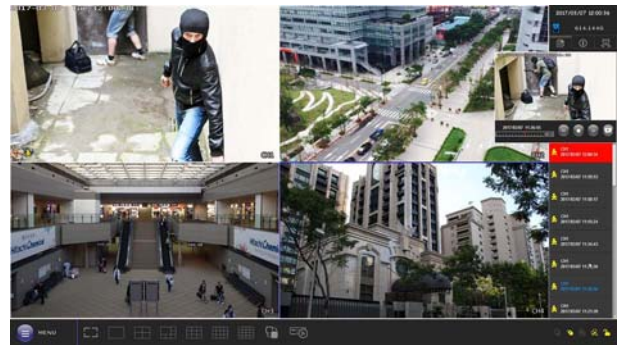
- Push Video to send instant notifications for an alarm event when an alarm device is connected to the recorder.
- Push Status to send instant notifications for system events, such as video loss or HDD data removal.

One Ethernet Cable Solution (POE, Power-over-Ethernet)

Camera power supply & video transmission over one Ethernet cable to eliminate the needs of power adapters for your cameras during the whole HD surveillance system setup.

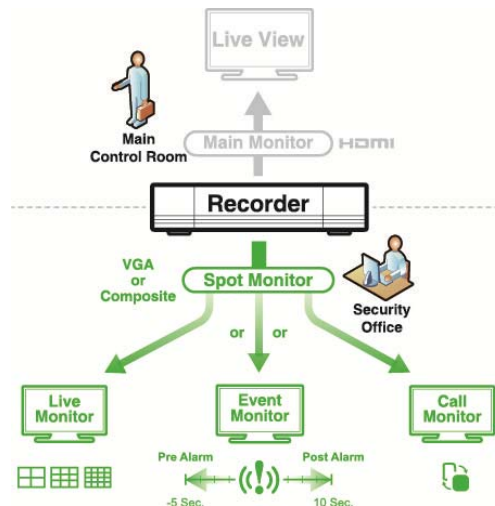
Event Pop-up / Preview

All events are listed on the right panel with corresponding event icons for you to quickly recognize the event type. The most current one will flash to catch your attention. Click one event and you're able to preview the footage with pre-alarm images.



Spot Monitor

In addition to the main display via the main HDMI output, you can assign a secondary display to show live view, call monitor or event monitor.





Specifications*

Hardware		
Video Input		8 LAN ports with PoE
Video Output	HDMI	YES (4K2K)
	VGA	YES (1080P / Spot Monitor Supported)
	Composite	YES (Spot Monitor Supported)
Video Output Resolution		3840 x 2160
Audio		1 in (mic in) / 1 out
Alarm I/O		4 in / 1 out
RS485		YES
HDD Storage**		Either one 14TB SATA HDD installed in the recorder, or a disk array connected to the recorder via the eSATA interface
USB Port		YES
eSATA Port		Expandable with a SATA to eSATA cable
IR Remote Control		YES
Ethernet	POE port	10/100 Mbps with PoE x 8 (IEEE802.3af)
	Internet (WAN) port	1000 Mbps x 1
Software		
Video Compression Format		H.265
Audio Compression Format		G711
Local / Remote Display Mode		9CH
Local / Remote Playback Mode		9CH
Local Single Channel Playback		YES
Recording Mode		Manual / Event / Alarm / Schedule
Record Streaming		Dual
Recording Throughput		270 IPS @ 3264 x 2448, up to 160Mbps
Pre-alarm Recording		YES
Quick Search		Time / Event
Event Notification		Push Video / Push Status / Video Mail / Message Mail
Security		Multiple user access levels with password
Multicast		YES
Seamless Recording***		YES
EaZy Networking		YES
IVS***		YES (9CH)
Spot Monitor Setup		YES (VGA & Composite)
Alarm Scenario Setup		YES
Alarm Pop-up & Preview		YES
Free DDNS Service		YES

Specifications*

Network	
Protocols	DDNS, PPPoE, DHCP, NTP, SNTP, TCP/IP, ICMP, SMTP, FTP, HTTP, RTP, RTSP, RTCP, IPv4, Bonjour, UPnP, DNS, UDP, IGMP, QoS, SNMP
Max. Online User	10
Remote Access	(1) Web browser: Windows Edge, Internet Explorer, Google Chrome & Safari (2) PC program: CMS Lite, 32CH CMS software for Windows OS (3) Mobile app: EagleEyes on iOS & Android mobile devices
General	
Power Source (±10%)	DC48V / 2.5A
Operating Temperature	10°C ~ 40°C (50°F ~ 104°F)
Operating Humidity	10% ~ 85%
Dimensions (mm)****	260 x 235.7 x 48
Net Weight (kg)	1.5
Minimum PC Browsing Requirements	<ul style="list-style-type: none"> • Intel core i3 or higher, or equivalent AMD • 2GB RAM • AGP graphics card, Direct Draw, 32MB RAM • Windows 10, Windows 8, Windows 7 & Windows Vista, DirectX 9.0 or later • Windows Edge, Internet Explorer 7.x or later
Optional Peripherals	HDMI Matrix (HDM02) / USB Joystick (AVX102) / SATA to eSATA cable (PWSC07F120200)

*The specifications are subject to change without notice

** HDDs are optional.

*** Available only when the connected cameras are supported

**** Dimensional tolerance: ±5mm

Rear Panel

