

## DS-6900UDI SERIES DECODER



### Features and Functions

#### Professional and Reliable

- | DS-6901UDI provides HDMI, VGA, and BNC output interfaces.
- | DS-6904UDI, DS-6908UDI, DS-6910UDI, DS-6912UDI, DS-6916UDI provide HDMI (adaptable to DVI-D) and BNC output interfaces.
- | Up to 4K (3840 × 2160@30Hz) via HDMI output interfaces (only for even interface).
- | Up to 16-ch decoding at 12 MP resolution (DS-6916UDI).
- | H.265+/H.265, H.264+/H.264, MPEG4 and MJPEG video compression.
- | PS, RTP, TS, ES, HIK encapsulation formats.
- | Three encoding levels: baseline, main, and high-profile.
- | G.722, G711A, G726, G711U, MPEG2-L2, and AAC audio compression.
- | Two decoding modes: active decoding and passive decoding.
- | Remote video files' decoding output.
- | Supports window opening and window roaming.
- | Supports multi-screen control with PC installed with RSC server.
- | Supports Wi-Fi module access to display the signal from IOS/Android mobile phone or pad on video wall.
- | Wi-Fi can be enabled via the Web browser or client software. You can get stream and decode the video on the video wall when Wi-Fi is enabled if no wired network can be accessed.
- | Gets stream and decodes via URL and RTSP from encoding devices.
- | Displays the decoded video stream on the video wall by directly linking cameras or by stream media forwarding.
- | You can configure what the video wall show when decoding ends and streaming fails via the Web browser and client software.
- | Configurable LED width and height parameters when the LED is connected.
- | Regular and irregular virtual screen configurable to display multiple signal sources and get rid of the restriction of physical screen.
- | Accessible by thermal network camera and you can view the temperature measurement, dynamic fire source detection, ship detection and VCA information in live view and playback.
- | You can enable or disable the smart information for the thermal network camera.
- | Remote PTZ control via transparent channel.
- | Two-way audio.
- | Port aggregation technology (Ethernet Channel).



DS-6901/6904/6908UDI

## Specifications

Model		DS-6901UDI	DS-6904UDI	DS-6908UDI
Video/Audio output	VGA and DVI-I input	/	WSXGA: 1680×1050/60Hz WXGA: 1440×900/60Hz WXGA: 1280×800/60Hz, 1366×768/60Hz, 1080p: 1920 × 1080@50/60Hz UXGA: 1600 × 1200@60Hz XVGA: 1280 × 960@60Hz 720p: 1280 × 720@50Hz/60Hz SXGA: 1280 × 1024@60Hz XGA: 1024 × 768@60Hz	
Video/Audio output	HDMI output	1-ch	4-ch	8-ch
		4K: 3840 × 2160@30Hz (for even interface only) 1080p: 1920 × 1080@50/60Hz WSXGA: 1680×1050/60Hz UXGA: 1600 × 1200@60Hz (for even interface only) 720p: 1280 × 720@50Hz/60Hz SXGA: 1280 × 1024@60Hz XGA: 1024 × 768@60Hz		
	VGA output	1-ch	/	/
		1080p: 1920 × 1080@50/60Hz WSXGA: 1680×1050/60Hz SXGA: 1280 × 1024@60Hz 720p: 1280 × 720@50Hz/60Hz XGA: 1024 × 768@60Hz		
BNC output	1-ch	2-ch, 1 DB 15	4-ch, 1 DB 15	
Audio/ Video decoding	Decoding resolution	Up to 12MP		
	Decoding channel	16-ch	32-ch	64-ch
	Decoding capability	12MP@20fps: 2-ch 8MP@30fps: 4-ch 5MP@30fps: 6-ch 3MP@30fps: 10-ch 1080p@30fps: 16-ch	12MP@20fps:4-ch 8MP@30fps: 8-ch 5MP@30fps: 12-ch 3MP@30fps: 20-ch 1080p@30fps: 32-ch	12MP@20fps:8-ch 8MP@30fps: 16-ch 5MP@30fps: 24-ch 3MP@30fps: 40-ch 1080p@30fps: 64-ch
	Split screen	1/4/6/8/9/12/16	1/4/6/8/9/12/16/25	1/4/6/8/9/12/16/25/36
External interface	Network interface	1, 10/100/1000 Mbps self-adaptive Ethernet interface	2, 10/100/1000 Mbps self-adaptive management network interface 2, 10/100/1000 Mbps self-adaptive Ethernet interface 16, 10M/100Mbps self-adaptive Ethernet	

			interface	
	Serial interface	1 RS-232 (RJ45), 1 RS-485		
	Two-way audio in	1-ch, 3.5 mm connector (2.0 Vp-p, 1 K $\Omega$ )		
	Two-way audio out	1-ch, 3.5 mm connector (2.0 Vp-p, 1 K $\Omega$ )		
	Audio output	1-ch	4-ch, 1 DB 15	8-ch, 1 DB 15
	Alarm in	8-ch		
	Alarm out	8-ch		
General	Power supply	12 VDC	220 VAC	
	Power consumption	$\leq 15$ W	$\leq 70$ W	
	Working temperature	-10 °C to +55 °C (14 °F to 131 °F)		
	Working humidity	10% to 90%		
	Dimensions (W × D × H)	220 × 148 × 45 mm (8.66 × 5.83 × 1.77 inch)	440 × 311 × 44.5 mm (17.32 × 12.24 × 1.75 inch)	
	Weight	$\leq 1.2$ kg (2.65 lb)	$\leq 5.2$ kg (11.4 lb)	

DS-6910/6912/6916UDI

Model		DS-6910UDI	DS-6912UDI	DS-6916UDI
Video/Audio output	VGA and DVI-I input	WSXGA: 1680×1050/60Hz WXGA: 1440×900/60Hz WXGA: 1280×800/60Hz, 1366×768/60Hz, 1080p: 1920 × 1080@50/60Hz UXGA: 1600 × 1200@60Hz XVGA: 1280 × 960@60Hz 720p: 1280 × 720@50Hz/60Hz SXGA: 1280 × 1024@60Hz XGA: 1024 × 768@60Hz		
	HDMI output	10-ch	12-ch	16-ch
Video/Audio output	HDMI output	4K: 3840 × 2160@30Hz ( for even interface only) 1080p: 1920 × 1080@50/60Hz WSXGA: 1680×1050/60Hz UXGA: 1600 × 1200@60Hz (for even interface only) 720p: 1280 × 720@50Hz/60Hz SXGA: 1280 × 1024@60Hz XGA: 1024 × 768@60Hz		
	BNC output	5-ch, 2 DB 15	6-ch, 2 DB 15	8-ch, 2 DB 15
Audio/ Video decoding	Decoding resolution	Up to 12MP		
	Decoding channel	80-ch	96-ch	128-ch
	Decoding capability	12MP@20fps: 10-ch 8MP@30fps: 20-ch 5MP@30fps: 30-ch 3MP@30fps: 50-ch 1080p@30fps: 80-ch	12MP@20fps: 12-ch 8MP@30fps: 24-ch 5MP@30fps: 36-ch 3MP@30fps: 60-ch 1080p@30fps: 96-ch	12MP@20fps:16-ch 8MP@30fps: 32-ch 5MP@30fps: 48-ch 3MP@30fps: 80-ch 1080p@30fps/3 Mbps: 128-ch
	Split screen	1/4/6/8/9/12/16/25/36		
External interface	Network interface	2, 10/100/1000 Mbps self-adaptive management network interface 2, 10/100/1000 Mbps self-adaptive Ethernet interface 16, 10M/100 Mbps self-adaptive Ethernet interface		
	Serial interface	1 RS-232 (RJ45), 1 RS-485		
	Two-way audio in	1-ch, 3.5 mm connector (2.0 Vp-p, 1 KΩ)		
	Two-way audio out	1-ch, 3.5 mm connector (2.0 Vp-p, 1 KΩ)		
	Audio output	10-ch, 2 DB 15	12-ch, 2DB 15	16-ch, 2 DB 15
	Alarm input	8		
Alarm out	8			

General	Power supply	100 to 240 VAC
	Power consumption	≤ 108 W
	Working temperature	-10 °C to +55 °C (14 °F to 131 °F)
	Working humidity	10% to 90%
	Dimensions (W × D × H)	440 × 311 × 80 mm (17.32 × 12.24 × 3.15 inch)
	Weight	≤ 6.4 kg (14.11 lb)

## Physical Interfaces

### DS-6901UDI Front Panel and Rear Panel



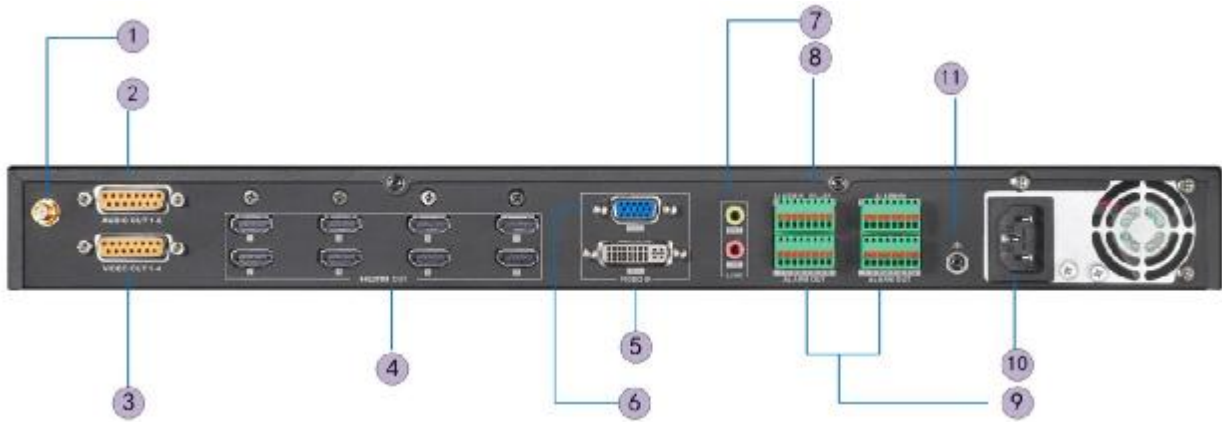
Index	Description	Index	Description
1	Network connection LED indicator	8	Line input/output
2	Power LED indicator	9	RS-232 interface
3	Data transmitting/receiving status LED indicator	10	Alarm input/output
4	HDMI video output	11	LAN 10/100/1000 Mbps Ethernet interface
5	VGA video output	12	RS-485 interface
6	Audio out	13	Power supply (12 VDC)
7	BNC video output	14	GND (Ground)

### DS-6904UDI/6908UDI Front Panel



Index	Description	Index	Description
1	Power indicator	6	LAN 10/100/1000 Mbps Ethernet interface 2
2	HDD 1 indicator (reserved)	7	RS-232 interface
3	HDD 2 indicator (reserved)	8	Local management network interface 1
4	USB 2.0	9	LAN 10/100/1000 Mbps Ethernet interface 1
5	Local management network interface 2	10	LAN 10/100 Mbps Ethernet interface

## DS-6908UDI Rear Panel

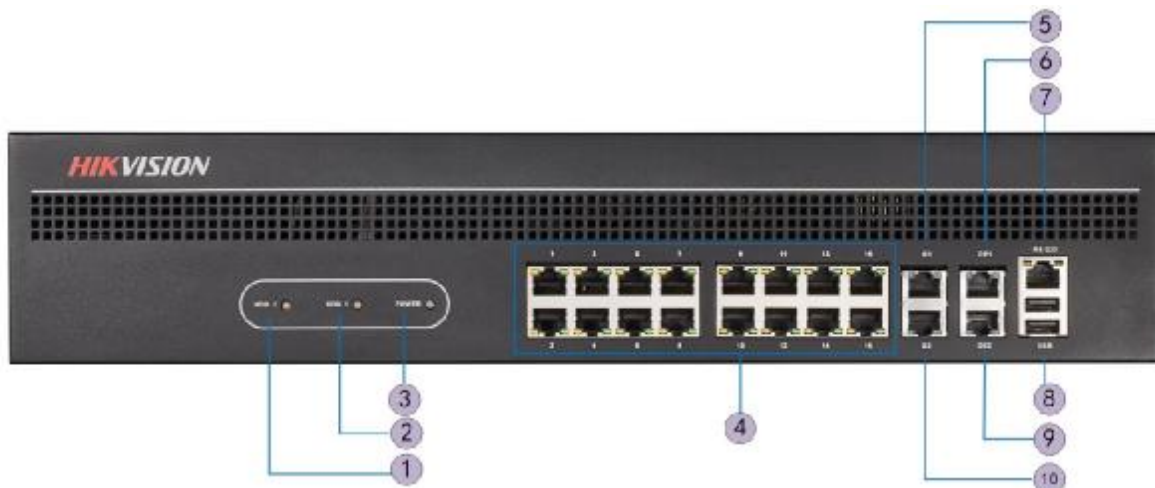


Index	Description	Index	Description
1	Wi-Fi	7	Line input/output
2	Audio out	8	RS-485 interface
3	Video out	9	Alarm input/output
4	HDMI video out	10	Power
5	DVI video input	11	GND
6	VGA video input		



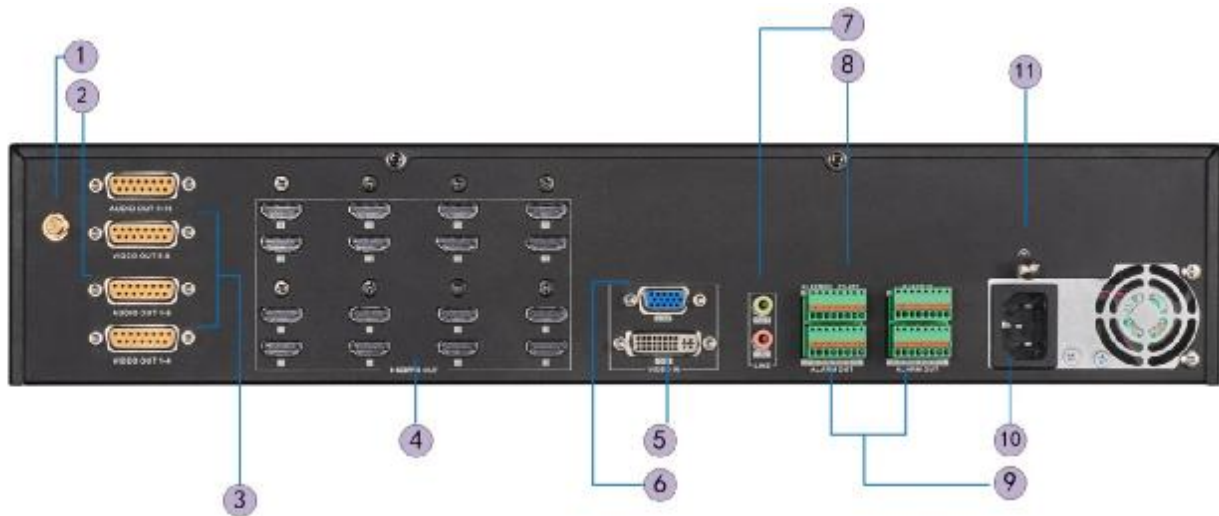
DS-6904UDI provides 4-ch HDMI output interfaces and other interfaces are the same with DS-6908UDI.

## DS-6910UDI/6912UDI Front Panel



Index	Description	Index	Description
1	HDD 1 indicator (reserved)	6	Local management network interface 1
2	HDD 2 indicator (reserved)	7	RS-232 interface
3	Power indicator	8	USB 2.0
4	LAN 10/100Mbps Ethernet interface	9	Local management network interface 2
5	LAN 10/100/1000 Mbps Ethernet interface 1	10	LAN 10/100/1000 Mbps Ethernet interface 2

## DS-6916UDI Rear Panel



Index	Description	Index	Description
1	Wi-Fi	7	Line input/output
2	Audio out	8	RS-485 interface
3	Video out	9	Alarm input/output
4	HDMI video output	10	Power
5	DVI video input	11	GND
6	VGA video output		

Document by



DS-6910UDI provides 10 HDMI output interfaces, DS-6912UDI provides 12 HDMI output interfaces and other interfaces are the same with DS-6916UDI.



### Headquarters

No.555 Qianmo Road, Binjiang District,  
Hangzhou 310051, China  
T +86-571-8807-9998  
oversaasbus@hikvision.com

**Hikvision USA**  
T +1-309-695-0400  
sales.usa@hikvision.com

**Hikvision Italy**  
T +39-0438-6907  
info.it@hikvision.com

**Hikvision Singapore**  
T +65-6884-4718  
sg@hikvision.com

**Hikvision Africa**  
T +27 (0) 0351172  
sale.africa@hikvision.com

**Hikvision Europe**  
T +31-23-55-42-770  
info.eu@hikvision.com

**Hikvision France**  
T +33(0)1-85-330-400  
info.fr@hikvision.com

**Hikvision Oceania**  
T +61-2-5599-4233  
salesau@hikvision.com

**Hikvision Hong Kong**  
T +852-2151-1761

**Hikvision Middle East**  
T +971-4-0316066  
info.me@hikvision.com

**Hikvision Spain**  
T +34-91-757-16-55  
info.es@hikvision.com

**Hikvision Canada**  
T +1-903-835-0400  
sales.usa@hikvision.com

**Hikvision Russia**  
T +7-495-666-67-99  
sa.enu@hikvision.com

**Hikvision Poland**  
T +48-22-480-01-50  
poland@hikvision.com

**Hikvision Korea**  
T +82-31-731-8841  
sales.korea@hikvision.com

**Hikvision India**  
T +91-22-28469900  
sales@pramehikvision.com

**Hikvision UK**  
T +01528-902140  
support.uk@hikvision.com

**Hikvision Brazil**  
T +55 11 3313-0050  
latam.support@hikvision.com