

64-Ch Windows-based NVR with 8-Bay Hard Disks



High Level Surveillance Solution

PLANET NVR-E6480, a high-definition IP surveillance solution, is designed to work with PLANET E-series cameras or ONVIF cameras for traffic surveillance, public and other security monitoring applications. The NVR-E6480 is the Windows-embedded 64-channel NVR that can connect up to 64 IP cameras and supports 8 hard disks. The unit employs RAID 0/1 to optimize the process of securing data easily and quickly.

The NVR-E6480 features Gigabit Ethernet ports, eMap, video motion detection, automatic camera registration, and mobile apps for smart phone and tablet connectivity. The NVR-E6480, capable of recording 300Mbps of video bandwidth, supports a wide range of resolutions in H.264, MPEG-4 and M-JPEG formats. In addition, the NVR is able to work with extended software such as ALPR (Automatic License Plate Recognition) and IVS (Intelligent Video Surveillance). Through these value-added applications, the NVR is definitely a necessity to keep track of those critical moments saved as evidences when in need.



Hardware

- Windows-embedded standalone NVR
- 2U rack-mount design
- Dual Gigabit Ethernet ports
- E-SATA, VGA and USB interface supported
- Audio line-in, line-out and mic-in jacks

Video & Audio

- Simultaneous recording and live video streaming
- Supports M-JPEG, MPEG-4 and H.264 compressions
- 64-channel IP camera input
- Video resolution up to 10 mega-pixel
- 2-way audio support

Video Recording & Backup

- Manual, event or scheduled recording of 64 IP cameras simultaneously
- Supports recording frame rate up to 1920fps
- Instant playback in live view
- Supports 8 SATA hard disks (RAID 0/1) for storage, up to 6TB per HDD
- Exports recorded video file in AVI or RAW format

Network Service

- 2 x RJ45, 10/100/1000BASE-T
- IPv4, IPv6, TCP/IP, UDP, HTTP, DHCP, RTP, RTSP, DNS, NTP (SNTP), ICMP, ARP, SMTP, FTP, UPnP, LDAP, ONVIF

Easy Installation & Management

- ONVIF compliant for interoperability
- Supports multiple languages
- Dual stream management
- Location-based management with eMap
- Up to max. 64 channels with the central management software
- Supports USB keyboard and mouse
- Remote access via mobile app viewer and Web browser
- Cam Viewer E-series software supported – CV7-VA, CV7-LP

Instant Playback

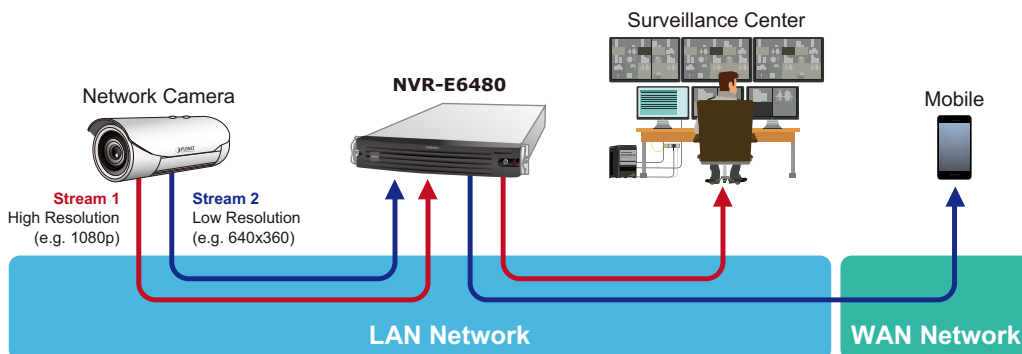
On the Live View page of the NVR-E6480's management interface, whenever you want to look back to check suspicious events of a camera channel you just missed, just hit the 'Instant Playback' button to bring up the window to review recent feeds. While you don't have to switch to the Playback page to do so, you can still have full live views of other channels simultaneously.



Instant Playback in Live View

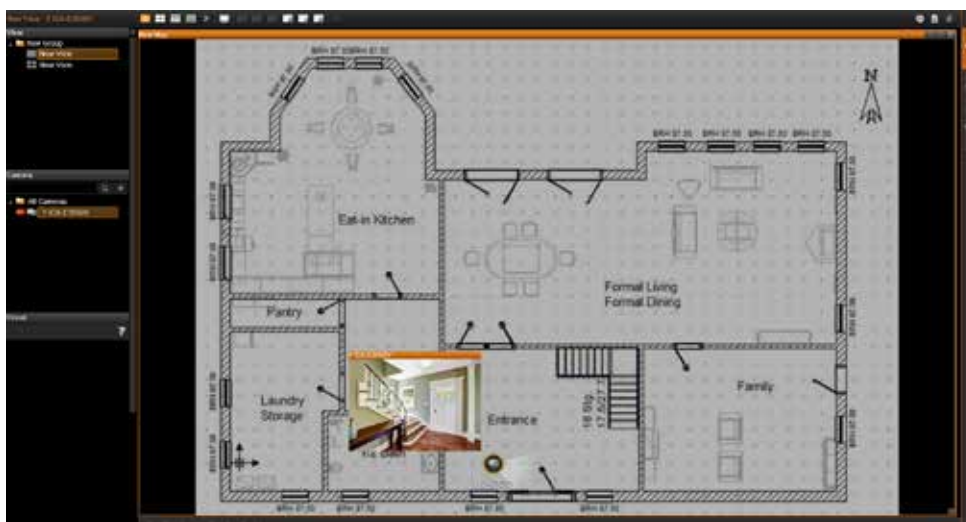
Dual Stream Management

The NVR provides dual stream management in live view and recording functions. User is able to monitor or record stream 1 or stream 2 of dual stream devices. This design is able to reduce the CPU and memory loading of the NVR that handles a large number of channels.



Location Management with eMap

The eMap function helps visualize the layout of IP cameras in the surveillance network enabling you to quickly identify the location of each IP camera, especially when an alarm occurs. Just upload the pictures of the monitoring locations and drag and drop the IP camera icons to the right place on the eMap. Once an alarm event happens, the camera icons will flash to indicate the event type for you to be alerted immediately and take necessary actions.



Remote Access via Mobile App, Web Browser or CMS

The NVR-E6480 provides central surveillance management capability with the adoption of its bundled Central Management Software (CMS). With the CMS, the NVR system is expandable for multi-sites management of up to 64 surveillance channels simultaneously. Besides, users are able to monitor the NVR via mobile app viewer or the Web browser anytime, anywhere.



Large Storage Capacity

The NVR-E6480 is suitable for various network environments. Besides applications in retail stores and SMBs, the NVR-E6480 offers 8 SATA HDDs supporting RAID 0/1 function and is able to be applied in large scale surveillance facilities, such as banks, enterprises, transportations, campuses, etc.

8 x SATA hard disk drive



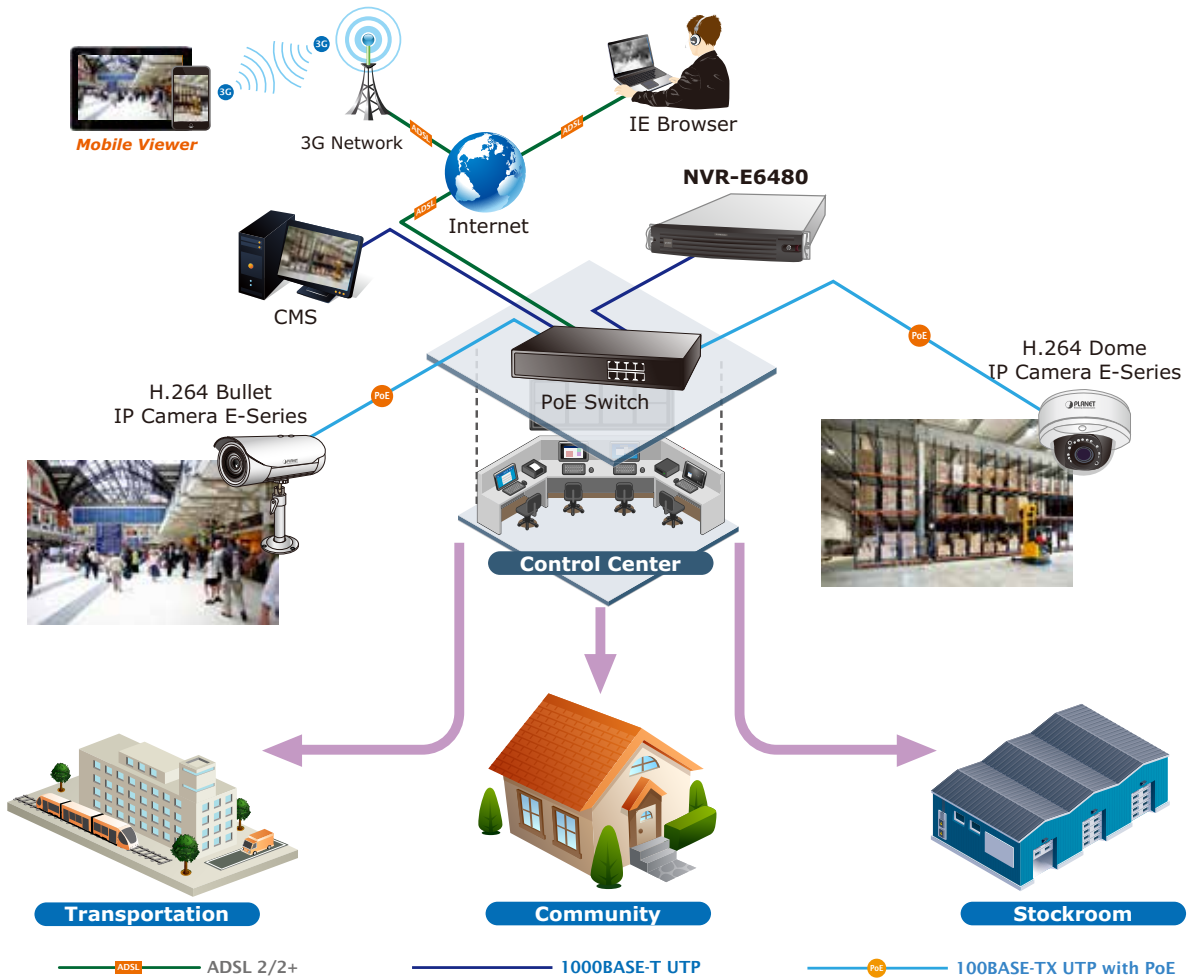
3.5 inch HD

Provides scalability up to 48TB

Applications

Perfect for Indoor Surveillance Applications

PLANET NVR-E6480 is a rack server optimized for reliable high-definition surveillance. The NVR is preloaded with all necessary software and preconfigured to minimize installation time. It is then completed with PLANET E-series cameras and extended software to formally begin surveillance. With dual Ethernet ports, ONVIF standard, CMS management, eMap and high storage capacity features, the NVR-E6480 is especially perfect for indoor surveillance in such places as department stores, factories, communities, enterprises, transportations, campus, etc.



Specifications

Product	NVR-E6480
Hardware	
CPU	Intel Processor
RAM	2GB
Operating System	Windows 7 Standard Embedded
Ethernet	2 x RJ45, 10/100/1000BASE-T
USB Interface	6 x USB 2.0 for backup device and firmware upgrade
Video Interface	VGA video interface
Audio Interface	Mic-in, line-in and line-out
Storage Device	8 x 3.5" SATA II hard disk connectors; up to 6TB per HDD
External Storage Interface	1 x eSATA
LED	Power
Button	Power
Camera	
Max. Channels	64-channel IP cameras
Function	Manual, auto or ONVIF search
Video	
Compression	H.264, MPEG-4, M-JPEG
Resolution	10MP, 5MP, 4MP, 3MP, 2MP, 1.3MP, 1MP, VGA
Max. Live Video Frame Rate (Local Display)	6fps@10MP (1-ch), 15fps@5MP (1-ch), 8fps@4MP (1-ch), 15fps@3MP (1-ch), 30fps@2MP (1-ch), 30fps@1.3MP (1-ch), 30fps@1MP (1-ch), 30fps@VGA (1-ch) *The above performance was tested with the following parameters: H.264 compression and 3Mbps bitrate
Audio	
Audio Type	2-way
Live View	
Display Layout Mode	Local: 1, 4, 5, 6, 8, 9, 10, 12, 16 Remote: 1, 4, 5, 6, 8, 9, 10, 12, 16, 18, 24, 25, 35, 36, 48, 49, 64
Digital Zoom	Zoom in/out digitally by PiP (Picture-in-Picture)
Manual Recording/Snapshot	Instant recording upon mouse click/Instant snapshot upon mouse click or hot key
Dual Stream Management	Live view of stream 1 or stream 2 of dual stream devices
Event Panel	Displays event status upon alarm or upon connection loss or recovery
Instant Playback	Instant playback in live view window
E-map	Area maps with camera icons and small live view windows hyperlinks
Playback	
Video Search	Time/Event based
Playback Control	Continuous forward and backward playback with speeds 1x, 2x, 4x, 8x or frame-by-frame; pause; stop
Manual Snapshot	Instant snapshot from playback upon mouse click
Digital Zoom	Zoom in/out digitally by PiP (Picture-in-Picture)
Synchronized Playback	Up to 9 channels for local display; up to 64 channels for remote client
Video Export	Export video clips in AVI or RAW format
Recording	
Recording Throughput	Maximum total bitrate 300Mbps
Schedule Recording	Record video with user defined schedule
Event Recording	Record video when the alarm event is triggered, including the pre-event buffered video clip
Frame Rate Setting	Different recording frame rate settings for non-event and triggered event
Manual Recording	Instant recording upon mouse click
Dual Stream Management	Recording of stream 1 or stream 2 of dual stream devices
Recording Frame Rate	Max. 1920fps in total; max. 30fps per camera
Monitor	
Max. Local Display Resolution	1920 x 1200
Network and Configuration	
Network Service	IPv4, IPv6, TCP/IP, UDP, HTTP, DHCP, RTP, RTSP, DNS, NTP (SNTP), ICMP, ARP, SMTP, FTP, UPnP, LDAP, ONVIF
Triggers and Event	
Event Type	Video motion detection, passive IR sensor, external device through digital input, video loss and recovery, network loss and recovery, server loss and recovery, disk full, disk not found
Event Action	Record video, pop-up window with live video, switch to hotspot window, play beep sound, activate external device through digital output, upload snapshot to FTP server, execute system command to activate other programs, eMail notification with snapshots, command a PTZ device to go to a preset point
Manual Event	Manually activate external devices through digital output via live view monitor
Scheduler	Define the schedule of event manager

Management	
Max. Number of Clients	1 local, 3 remote
Privileges	Live, Playback, Setup, Global
User Interface	<ul style="list-style-type: none"> ■ Graphic local user interface (Operated by mouse, keyboard) ■ Web browser (Internet Explorer 7 or above) ■ CMS utility ■ App viewer
Multiple Languages Support	Arabic, Czech, Danish, German, Estonian, English, Spanish, Finnish, French, Hebrew, Hungarian, Indonesian, Italian, Japanese, Netherland, Polish, Portuguese, Romanian, Russian, Swedish, Thai, Turkish, Vietnamese, Simplified Chinese, Traditional Chinese
Log Type	User Operation, Setup Device, Setup System, Setup Users, Setup Schedule, Setup Event, System Status, Request Log
Environment	
Power	100-240V AC, 4-2A, 50-60Hz
Consumption	200W
Operating Temperature	0~40 degrees C
Humidity	10~85% RH
Weight	11.4 kg (with 1 system HDD and front cover)
Dimensions (W x D x H)	482 x 560 x 88 mm

Ordering Information

NVR-E6480	64-Ch Windows-based NVR with 8-Bay Hard Disks
-----------	---

Related Products

ICA-E3550V	5 Mega-pixel Vandalproof IR PoE IP Camera with Extended Support
ICA-E5550V	5 Mega-pixel Vandalproof IR PoE IP Camera with Extended Support
ICA-E6260	2 Mega-pixel PoE Plus Speed Dome IP Camera with Extended Support
ICA-E6265	2 Mega-pixel IR PoE Plus Speed Dome IP Camera with Extended Support
ICA-E8550	5 Mega-pixel Outdoor IR PoE Fisheye IP Camera with Extended Support
CV7-LP 2/4	2/4-Channel Cam Viewer E-series for Automatic License Plate Recognition
CV7-VA 4/9	4/9-Channel Cam Viewer E-series for Intelligent Management
GS-4210-48P4S	48-Port 10/100/1000T 802.3at PoE + 4-Port 100/1000BASE-X SFP Managed Switch (440W)
SGS-5220-24P2X	L2+ 24-Port 10/100/1000T 802.3at PoE + 2-Port 10G SFP+ Stackable Managed Switch (440W)