

SN-TPC4201KT(II)

Temperature Detection Thermal IP Camera



- Uncooled IRFPA Microbolometer
- Temperature detection
- Effective Pixels 400 × 300
- Sensitivity 50mK
- 8/15/25/35/50mm lens optional
- Infrared detection wavelength 8-14um
- Support 8 areas temperature Detection
- Support 17 color control
- Support DVE image Enhance
- Standalone operating

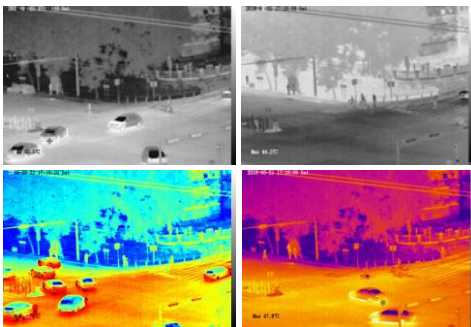
System Overview

Featuring a fixed lens bullet camera, this series provides an all-in-one solution that is especially beneficial for long distance video surveillance in outdoor applications. Together with Thermal technology, the camera's long range capabilities are able to be utilized even at night.

Functions

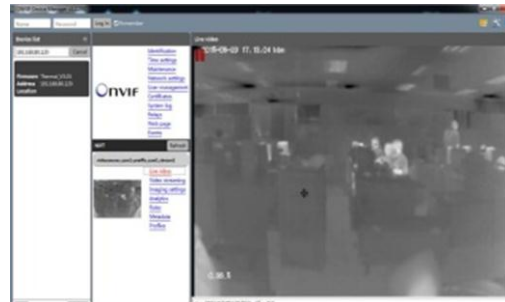
Image Color Modes

White hot/black hot/iron bow/rainbow up to 17 modes



Compatibility

ONVIF Compatible, also provide CGI and SDK for integration



Temperature Detection

Maximum temperature measure from area, up to 8 areas



IVS Security

Video Analytics with Perimeter ,Single Virtual Fences ,Double Virtual Fences ,Object Left ,Object Removed



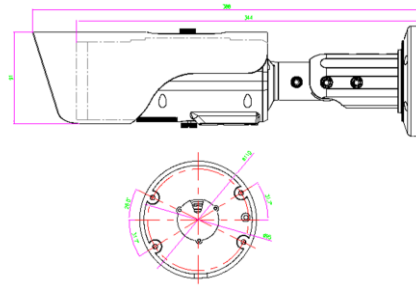
Technical Specification

| Thermal Camera | | | | | |
|---|--|-----------------|-------------------|--------------------|-------------------|
| Detector Type | Uncooled IRFPA Microbolometer | | | | |
| Effective Pixels | 400(H) × 300(V) | | | | |
| Pixel Size | 20um | | | | |
| Thermal Sensitivity (NETD) | 50mK @F1.0, 300K | | | | |
| Spectral Range | 8~14um | | | | |
| Image Setting | Polarity LUT/ DVE/ Mirror/ FCC/ /3D DNR Brightness/Contrast/ ROI | | | | |
| Color Palettes | Black-Heat /White-Heat/Rainbow/Iron-Red up to 17 modes | | | | |
| Pan/Tilt/Rotation Range | Pan:0°~360°; Tilt:0°~90°; Rotation:0°~360 | | | | |
| Thermal Lens | | | | | |
| Lens Type | Fixed | | | | |
| Focus Control | Manual Focus | | | | |
| Focal Length | 8mm | 15mm | 25mm | 35mm | 50mm |
| F No. | F1.0 | F1.0 | F1.0 | F1.0 | F1.0 |
| Angle of View | H: 43.6° V:18° | H: 24° V:18° | H: 14.6° V:11° | H: 10.5° V:7.8° | H: 7.3° V:5.5° |
| Temperature Detect Distance Fire(0.8m*0.8m) | 160m | 300m | 500m | 700m | 1000m |
| Recognition Distance Man(1.8m*0.5m) | 120m | 225m | 375m | 525m | 750m |
| Recognition Distance Vehicle(2.3m*2.3m) | 260m | 500m | 830m | 1160m | 1660m |
| Video and Audio | | | | | |
| Compression | H.265, H.264, MJPEG | | | | |
| Frame Rate | Main Stream: D1 @25/30fps | | | | |
| | Sub Stream: CIF @25/30fps | | | | |
| Bit Rate Control | CBR/VBR | | | | |
| Bit Rate | 100Kbps~6Mbps | | | | |
| Region of Interest | Off / On (8 Zone, Rectangle) | | | | |
| Electronic Image Stabilization(EIS) | N/A | | | | |
| Digital Zoom | 16x | | | | |
| Mirror | Support | | | | |
| Defog | Support | | | | |
| Motion Detection | Support | | | | |
| Privacy Masking | Off / On (5 Area, Rectangle) | | | | |
| DVE Image Enhance | Support | | | | |
| Audio Compression | G.711, AMR, RAW_PCM (Optional) | | | | |
| Intelligence | | | | | |
| Intelligent Functions | Motion detection, Disk alarm, I/O alarm, Temperature alarm | | | | |
| IVS | Perimeter ,Single Virtual Fences ,Double Virtual Fences ,Object Left ,Object Removed | | | | |

| Temperature Detection | |
|---|---|
| Temperature Detection | Point detection, Area detection |
| Temperature Alarm | Over temperature alarm, Temperature difference alarm |
| Precision | ±2℃ / ±2% |
| Detection Area | Support 8 areas (8 target) |
| Response Time | ≤30ms |
| Effective temperature working environment | -10℃ ~ 50℃ (14°F ~ 122°F) |
| Theory of temperature measurement range | -30℃ ~ 200℃ (-22°F ~ 392°F) |
| Temperature display mode | Temperature target >5℃, Display absolute temperature value; |
| | Temperature target ≤5℃, Display relative temperature value (temperature difference DEV = highest value - average) |
| NETWORK | |
| Ethernet | RJ-45 (10/100Base-T) |
| Protocols: | IPv4/IPv6 ,HTTP,RTSP/RTP/RTCP, TCP/UDP, DHCP, DNS, PPPOE, SMTP, SIP ,802.1x |
| Interoperability | ONVIF, CGI |
| Streaming Method | Unicast |
| Max. User Access | 10 Users |
| Edge Storage | NAS Local PC for instant recording Mirco SD card 128GB |
| Web Viewer | <IE11, Chrome, Firefox |
| Web Language | English, Chinese, Polish, Italian, Portuguese, Spanish, Russian, French, Czech, Hungarian |
| INTERFACE | |
| Ethernet | 1 Ethernet (10/100 Base-T) RJ-45 Connector |
| Audio Interface | 1ch Audio In,1ch Audio Out |
| Alarm | 2ch Alarm In,2ch Alarm Out |
| RS485 | Support |
| BNC Output | Support |
| Reset Button | Support |
| GENERAL | |
| Power Supply | DC12V/POE |
| Power Consumption | Max 5W |
| Operating Temperature | -10℃ ~ 55℃ (14°F ~ 131°F) |
| Storage Conditions | 0~ 90% RH |
| Certifications | CE /FCC |
| Ingress Protection | IP66 |
| Casing | Metal |
| Dimensions | φ 110x388mm |
| Net Weight | 1900g |

| Ordering Information | | |
|----------------------|----------------------|---------------------------------------|
| Type Part | Number | Description |
| SN-TPC4201KT(II) | SN-TPC4201KT/F8(II) | Thermal: 400 × 300 8mm Fixed lens |
| | SN-TPC4201KT/F15(II) | Thermal: 400 × 300 15mm Fixed lens |
| | SN-TPC4201KT/F25(II) | Thermal: 400 × 300 25mm Fixed lens |
| | SN-TPC4201KT/F35(II) | Thermal: 400 × 300 35mm Fixed lens |
| | SN-TPC4201KT/F50(II) | Thermal: 400 × 300 50mm Fixed lens |

Dimensions(mm)



Accessories

Optional:



SN-CBK627B
Pole Mount



SN-CBK633
Junction Box