

# IP7160

Fixed Network Camera

**2MP • Multiple Streams • SD/SDHC Card**



VIVOTEK IP7160 is a cost-effective 2-megapixel network camera ideal for locations and situations requiring accurate identification such as banks and airports. With a 2-megapixel sensor, the IP7160 can deliver extremely clear and detailed images for accurate video content analysis. Additionally, the camera can capture a more comprehensive area of a scene than a standard VGA camera, significantly reducing the number of cameras required.

The IP7160 also supports tamper detection, which detects data loss from camera tampering in real-time. When the camera is blocked, redirected, or spray-painted, security staff will be alerted immediately in accordance with the camera settings. In order to make more efficient use of bandwidth by reducing transmission of unnecessary data, the IP7160 features a SD/SDHC card slot for on-board storage, which also prevents data loss due to network disconnection. The integrated 802.3af compliant PoE function reduces cabling problems, making the IP7160 a cost-effective surveillance solution.

With other advanced features including simultaneous multiple streams, two-way audio via SIP protocol, and HTTPS encrypted data transmission, the IP7160 proves to be an affordable high-resolution surveillance system.

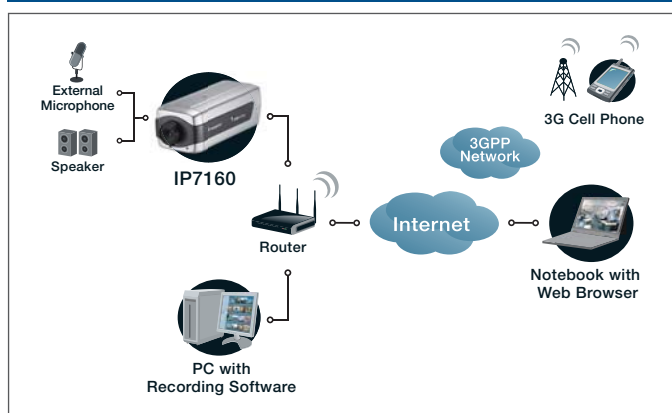
## Features

- > 2-megapixel CMOS Sensor
- > Auto-iris Lens (Optional)
- > Real-time MPEG-4 and MJPEG Compression (Dual Codec)
- > Multiple Streams Simultaneously
- > ePTZ for Data Efficiency
- > Activity Adaptive Streaming for Dynamic Frame Rate Control
- > Tamper Detection for Unauthorized Changes
- > 3GPP Mobile Surveillance
- > Built-in 802.3af Compliant PoE
- > Two-way Audio via SIP Protocol
- > Built-in SD/SDHC Card Slot for On-board Storage
- > Includes Free Standard 32-CH ST7501 Central Management Software

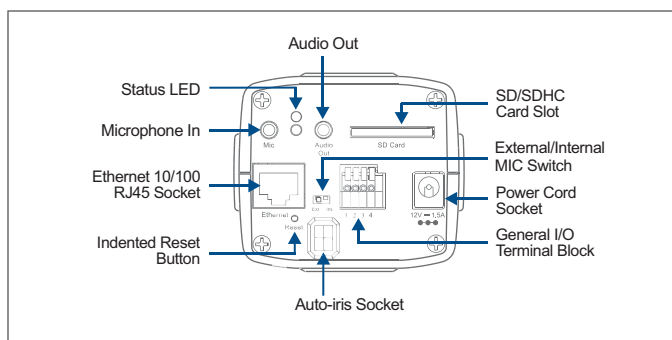
System	<ul style="list-style-type: none"> <li>CPU: Mozart 120 SoC</li> <li>Flash: 16MB</li> <li>RAM: 128MB + 128MB</li> <li>Embedded OS: Linux 2.6</li> </ul>
Lens	<ul style="list-style-type: none"> <li>CS-mount, f = 4.2 mm, F1.8, Fixed</li> </ul>
Angle of View	<ul style="list-style-type: none"> <li>71.2° (horizontal)</li> </ul>
Shutter Time	<ul style="list-style-type: none"> <li>1/5 sec. to 1/40,000 sec.</li> </ul>
Image Sensor	<ul style="list-style-type: none"> <li>1/3.2" CMOS sensor in 1600x1200 resolution</li> </ul>
Minimum Illumination	<ul style="list-style-type: none"> <li>0.3 Lux / F1.8</li> </ul>
Video	<ul style="list-style-type: none"> <li>Compression: MJPEG &amp; MPEG-4</li> <li>Streaming:                             <ul style="list-style-type: none"> <li>Simultaneous multiple streams</li> <li>MPEG-4 streaming over UDP, TCP, HTTP or HTTPS</li> <li>MPEG-4 multicast streaming</li> <li>MJPEG streaming over HTTP or HTTPS</li> </ul> </li> <li>Supports activity adaptive streaming for dynamic frame rate control</li> <li>Supports ePTZ for data efficiency</li> <li>Supports 3GPP mobile surveillance</li> <li>Frame rates:                             <ul style="list-style-type: none"> <li>MPEG-4: up to 30 fps at 800x600 up to 10 fps at 1600x1200</li> <li>MJPEG: up to 30 fps at 800x600 up to 15 fps at 1600x1200</li> </ul> </li> </ul>
Image Settings	<ul style="list-style-type: none"> <li>Adjustable image size, quality and bit rate</li> <li>Time stamp and text caption overlay</li> <li>Flip &amp; mirror</li> <li>Configurable brightness, contrast, saturation, sharpness, white balance and exposure</li> <li>AGC, AWB, AES</li> <li>BLC (Backlight Compensation)</li> <li>Supports privacy masks</li> </ul>
Audio	<ul style="list-style-type: none"> <li>Compression:                             <ul style="list-style-type: none"> <li>GSM-AMR speech encoding, bit rate: 4.75 kbps to 12.2 kbps</li> <li>MPEG-4 AAC audio encoding, bit rate: 16 kbps to 128 kbps</li> </ul> </li> <li>Interface:                             <ul style="list-style-type: none"> <li>Built-in microphone</li> <li>External microphone input</li> <li>Audio output</li> <li>External/Internal microphone switch</li> </ul> </li> <li>Supports two-way audio via SIP protocol</li> <li>Supports audio mute</li> </ul>
Networking	<ul style="list-style-type: none"> <li>10/100 Mbps Ethernet, RJ-45</li> <li>Protocols: IPv4, IPv6, TCP/IP, HTTP, HTTPS, UPnP, RTSP/RTP/RTCP, IGMP, SMTP, FTP, DHCP, NTP, DNS, DDNS, PPPoE, CoS, QoS, SNMP and 802.1X</li> </ul>
Alarm and Event Management	<ul style="list-style-type: none"> <li>Triple-window video motion detection</li> <li>Tamper detection</li> <li>One D/I and one D/O for external sensor and alarm</li> <li>Event notification using HTTP, SMTP or FTP</li> <li>Local recording of MP4 file</li> </ul>
On-board Storage	<ul style="list-style-type: none"> <li>SD/SDHC card slot</li> <li>Stores snapshots and video clips</li> </ul>
Security	<ul style="list-style-type: none"> <li>Multi-level user access with password protection</li> <li>IP address filtering</li> <li>HTTPS encrypted data transmission</li> <li>802.1X port-based authentication for network protection</li> </ul>
Users	<ul style="list-style-type: none"> <li>Live viewing for up to 10 clients</li> </ul>
Dimension	<ul style="list-style-type: none"> <li>154 mm (D) x 72 mm (W) x 62 mm (H)</li> </ul>
Weight	<ul style="list-style-type: none"> <li>623 g</li> </ul>
LED Indicator	<ul style="list-style-type: none"> <li>System power and status indicator</li> <li>System activity and network link indicator</li> </ul>

Power	<ul style="list-style-type: none"> <li>12V DC</li> <li>Power consumption: Max. 7 W</li> <li>802.3af compliant Power-over-Ethernet</li> </ul>
Approvals	<ul style="list-style-type: none"> <li>CE, LVD, FCC, VCCI, C-Tick</li> </ul>
Operating Environments	<ul style="list-style-type: none"> <li>Temperature: 0 ~ 50 °C (32 ~ 122 °F)</li> <li>Humidity: 90% RH</li> </ul>
Viewing System Requirements	<ul style="list-style-type: none"> <li>OS: Microsoft Windows 2000/XP/Vista</li> <li>Browser: Mozilla Firefox, Internet Explorer 6.x or above</li> <li>Cell phone: 3GPP player</li> <li>Real Player: 10.5 or above</li> <li>Quick Time: 6.5 or above</li> </ul>
Installation, Management, and Maintenance	<ul style="list-style-type: none"> <li>Installation Wizard 2</li> <li>32-CH ST7501 central management software</li> <li>Supports firmware upgrade</li> </ul>
Applications	<ul style="list-style-type: none"> <li>SDK available for application development and system integration</li> </ul>
Warranty	<ul style="list-style-type: none"> <li>24 months</li> </ul>

## System Overview



## External View



## Accessories

